

S
353.9786
G1soc

OFFICE OF THE GOVERNOR
STATE OF MONTANA



MARC RACICOT
GOVERNOR

STATE CAPITOL
HELENA, MONTANA 59620-0801

MEMORANDUM

TO: Agency Directors
FROM: Dave Ashley
DATE: October 23, 1995
RE: State Organization Charts

Thank you for your help with the state organization charts. Attached are copies for your use.

There are two charts which describe the executive branch. The first chart lists major agency functions. This chart, along with the charts for the legislative and judicial branches, will appear in the next issue of the state's telephone book. The second chart shows agency reporting relationships.

If you find serious problems changes can still be made prior to publication in the phone book (particularly if your suggestions reduce text!). These charts are available on 8 1/2" x 11" paper as well. If that serves your needs better please contact Anita Gray at 444-2587.

If you have questions, please contact me at 444-0575.

attachment

STATE DOCUMENTS COLLECTION

APR 08 1996

MONTANA STATE LIBRARY
1515 E. 6th AVE.
HELENA, MONTANA 59620

PLEASE RETURN

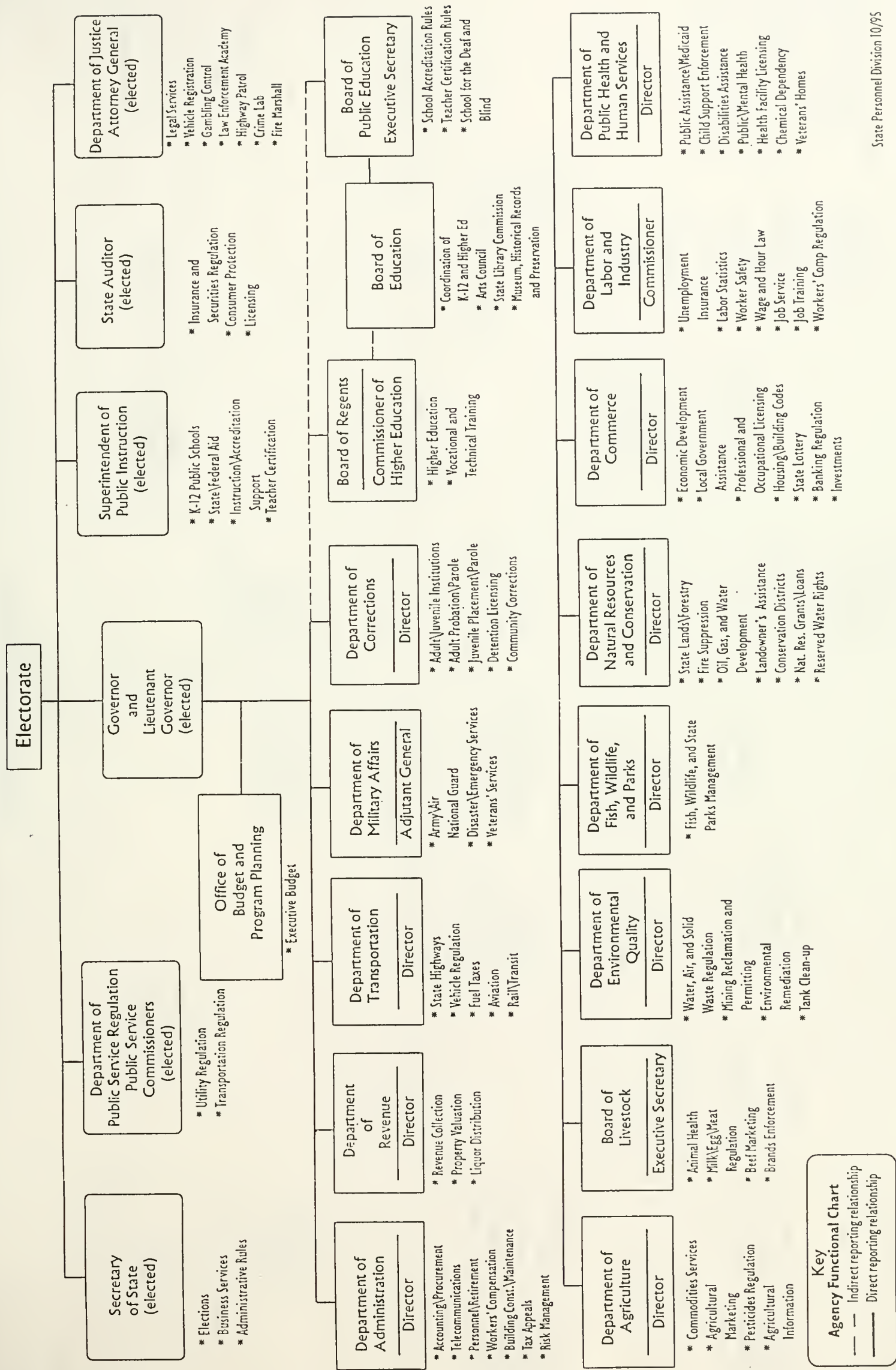




Digitized by the Internet Archive
in 2010 with funding from
Montana State Library

<http://www.archive.org/details/stateorganizatio1995mont>

Montana Executive Branch



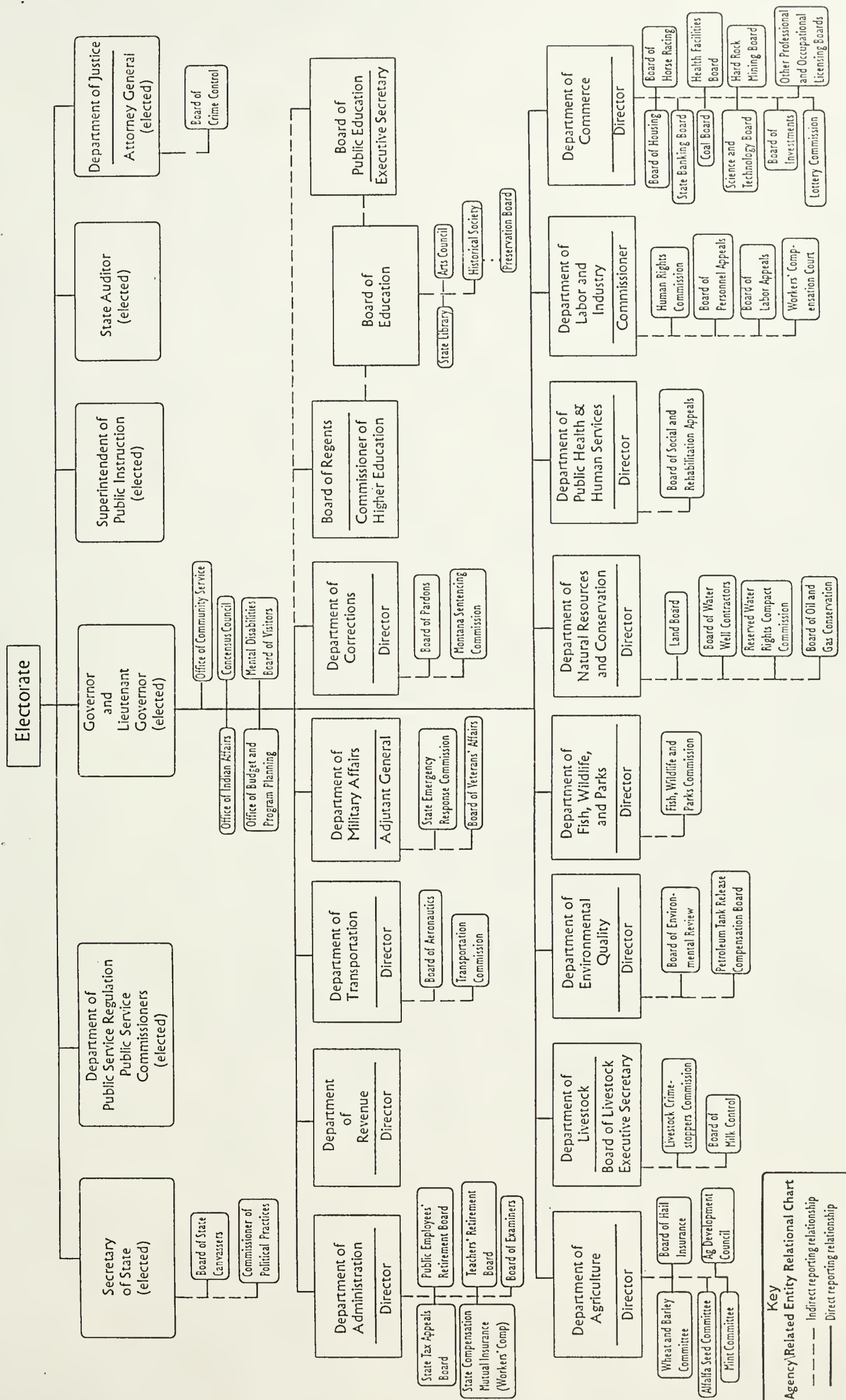
Key

Agency Functional Chart

— Indirect reporting relationship

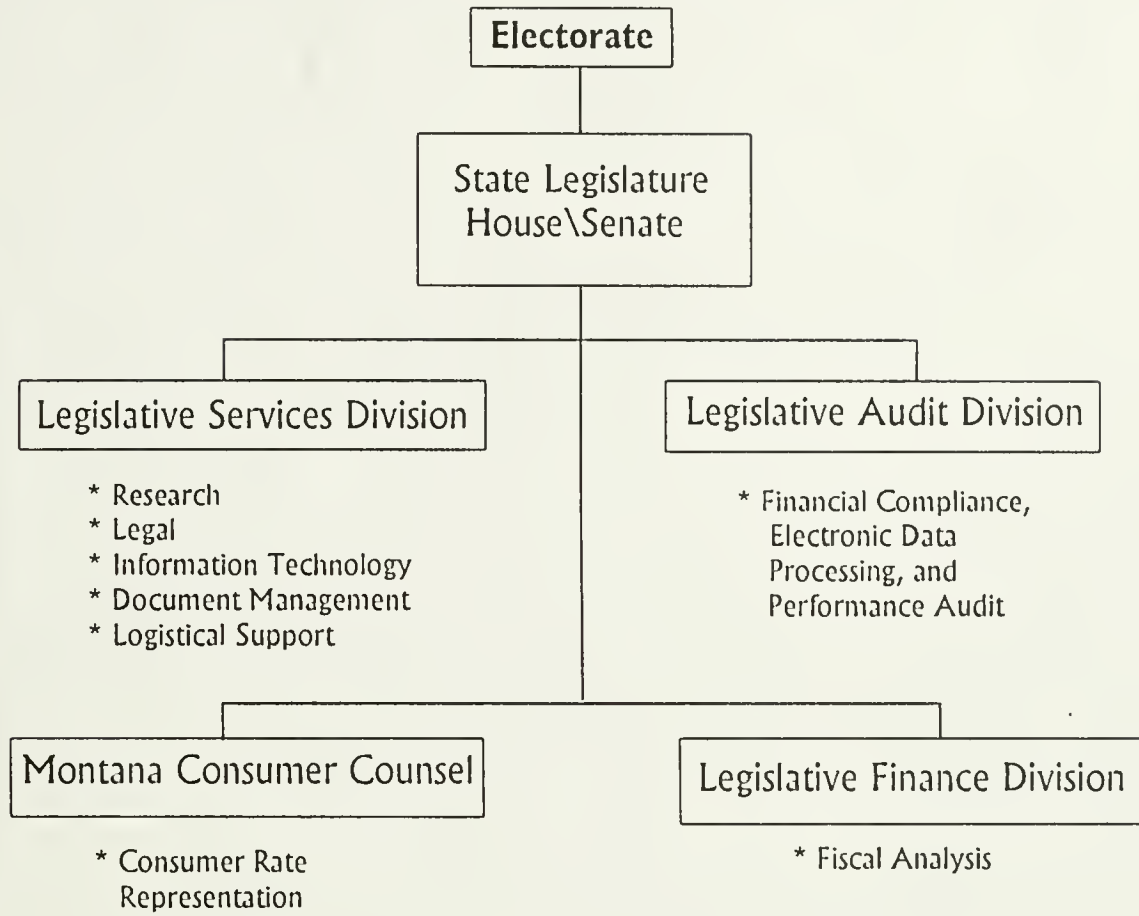
— Direct reporting relationship

Montana Executive Branch



Key
 Agency/Related Entity Relational Chart
 - - - Indirect reporting relationship
 — Direct reporting relationship

Montana Legislative Branch



Montana Judicial Branch

